



BIOS Icarus[®] Li

Shallow tray, Growth Chamber, Vertical Farming

Introducing the BIOS Icarus[®] Li LED Grow Light, the controlled environment agricultural industry's choice for a durable, light-weight, moveable, vertical grow light bar. The Icarus Li LED grow light bars are a cost effective solution for a variety of grow light applications where multiple bars can be daisy chained and easily moved according to desired light bar spacing. The Icarus Li LED Grow Light has an optimized broad spectrum that maximizes photosynthesis and plant growth while also providing the ideal conditions for a comfortable visual experience, superior PAR efficacy, and accurate crop assessment. Applications include shallow tray, growth chamber, vertical farming, intracanopy lighting, greenhouse supplemental lighting, and more.

FEATURES AND BENEFITS

- Fully assembled, industrial grade construction and durability
- Slim, lightweight design optimizes space and allows repositioning
- over the plant canopy in a variety of applications
- Optimized, dimmable, broad spectrum for all phases of plant growth and for ease in crop assessment
- Clip brackets allow easy installation into racking system
- Bars can be daisy chained by quick release connectors to a single power supply
- Scientifically engineered spectrum to maximize photosynthesis, growth, yield, and quality
- Superior lighting uniformity across the plant canopy
- Sustainable and environmentally friendly mercury-free lighting source compared to traditional technologies (HID and fluorescent) which require hazardous waste disposal
- Wet-rated with cover to protect sensitive electronics from grow environment
- Easily cleaned for optimal (maximum) light output over time

APPLICATIONS

Indoor crop production, greenhouse supplemental lighting, intracanopy, intercanopy, growth chambers



Wet-Rated

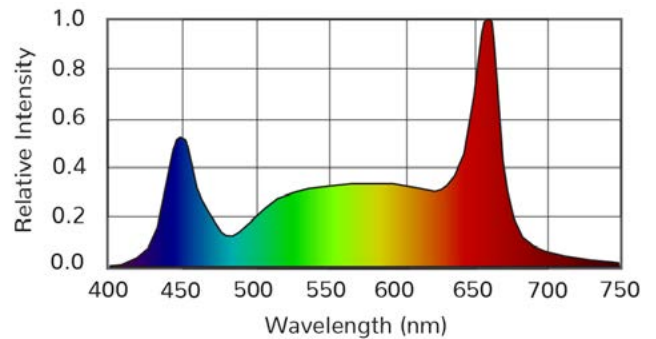


100% Cleanable

FEATURES AND BENEFITS

- Fixture Wattage: 79 Watts
- Voltage: 110-277VAC & 277-480VAC
- Photosynthetic Photon Flux ($\mu\text{mol PAR/s}$): 173 $\mu\text{mol/s}$
- PAR Photon Efficacy ($\mu\text{mol PAR/J}$): 2.2 $\mu\text{mol/J}$
- Optimal Mounting Height: 6"- 24" above the plant canopy
- Spectrum: Photosynthetically Optimized Broad Spectrum
- Fixture Dimensions: 44" L x 2.13" W x 2.27" H (111.7 cm x 5.4 cm x 5.8 cm)
- Fixture Weight: 4.2 lbs (1.9 kg)
- Housing and Finish: Anodized clear
- Mounting: Top Clips or End-cap L Brackets
- Dimming: 0-10 V Dims to Off
- Rated Power Factor: >95%
- Warranty: 5 Year Limited
- Ingress Protection: IP65
- Certifications: UL1598 wet location rated, UL 8750, RoHS, FCC
- Photometrics: Leading Testing Laboratories

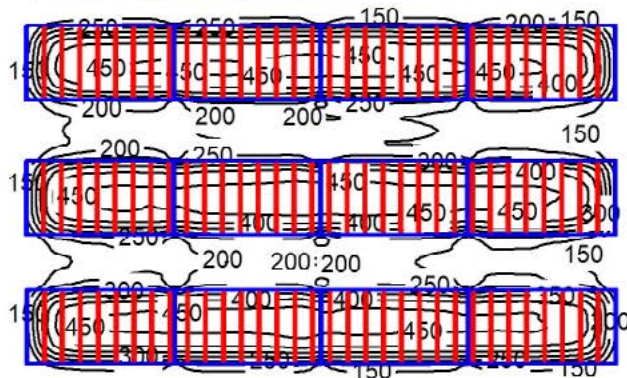
SPECTRAL GRAPH



EXAMPLE LIGHTING LAYOUT

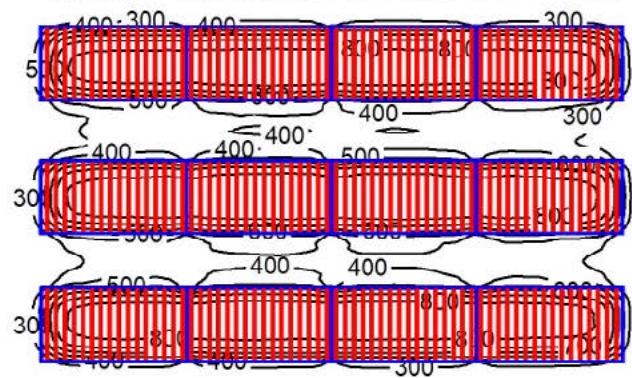
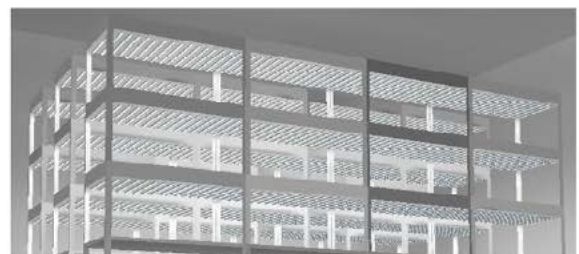
FOR 12 (4 FT X 8 FT) RACKING SHELVES WITH 3 TIERS IN 3 ROWS, SPACED 3 FT APART

Veg Growth Fixture arrangement
8 bars per rack, 288 total



12" Above Canopy

Flower Growth Fixture arrangement
16 bars per rack, 576 total



12" Above Canopy